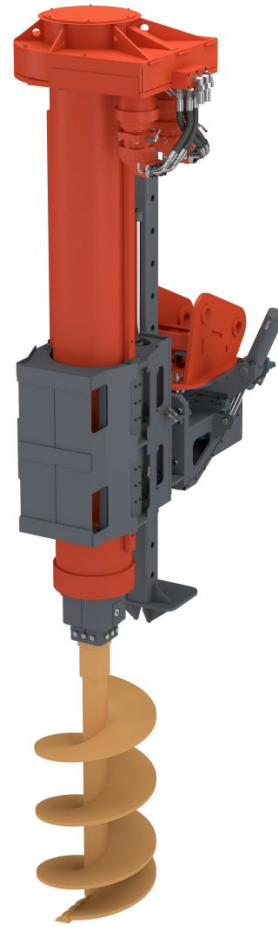


TAD-51

FEATURES

- Excavator-mounted auger drive attachments for cast in-situ piling and other earth drilling work. Especially suitable for work in confined spaces while still being good at reaching over obstacles. The telescopic design keeps the machine low and allows working on sites with limited headroom without compromising on drilling depth.
- Hydraulically operated telescopic kelly bar with one extension.
- Available with different type of augers for normal soil conditions, hard clay, hard soil etc.
- Controlled with the MOVAX Control System (MCS™); MCS Lite, MCS Pro or MCS Pro+auto.
- Reporting and documentation of piling works with M-logbook™ (optional, requires MCS Pro or MCS Pro+auto).



TECHNICAL DATA

Weight w/o adapter and auger	kg	3200
Width	mm	1013
Auger pressing force	N	15000
Auger pulling force	N	6000
Depth	mm	1673
Drill speedrange	rpm	11 - 74
Height w/o auger	mm	3855
Hole depth	m	6
Hole diameter*	mm	400 - 1200
Max return pressure	bar	5
Oil flow rate	l/min	75 - 250
Pressure relief set max	bar	5
Side tilt angle	°	+/- 30
Torque	Nm	50000

*depending on soil conditions and tooling